



YOKOHAMA

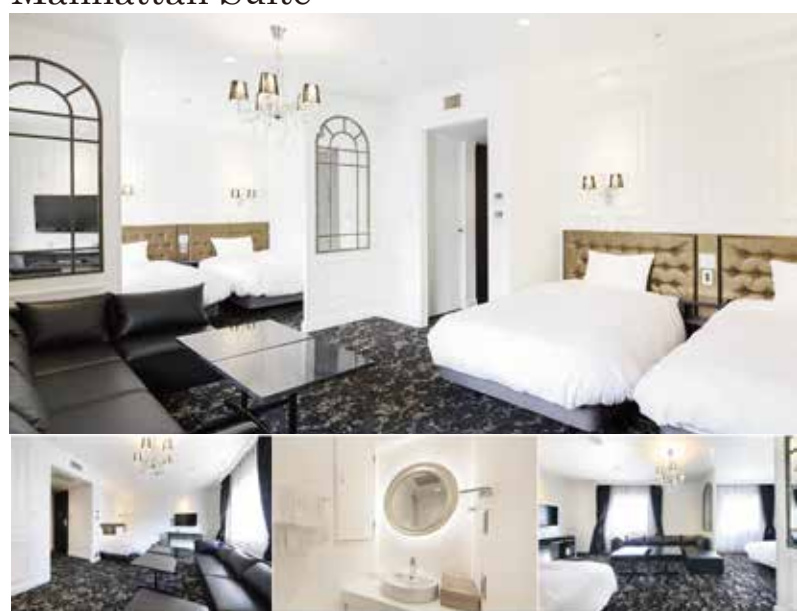
HOTEL PLUMM

2-9-1, Kitasaiwai, Nishi-ku, Yokohama, Kanagawa 220-0004, Japan

STAY

Suite Room

Manhattan Suite



Layout



Manhattan Suite



Palais Suite

We design hotel propose luxurious suite rooms.

Palais Suite



We promise you wonderful nights at our suite rooms. "Manhattan Suite Room" is black and white stylish design, and "Palais Suite Room" is shabby antique one. Four people can stay at these suite rooms.

Single, Semi-Double, Double Room



Room Type



Single



Semi-Double



Standard-Double

We have two types, simple standard type and designers' type like Scandinavian.

Both types are beautiful and functionally, you can enjoy the difference of style. The theme of designers' type is Scandinavian modern art using some pop colors for accent.

Superior Twin & Double Room



Room Type



Superior Twin



Superior Double

We named "SOHO", this stylish design comes from a penthouse in NY.

You can have so relaxing time at our "SOHO" rooms. This luxury design is made from strictly selected furniture, art and fabrics, and layouts are decided from clients' hotel life.

Facilities



We prepare SIMMONS bed mattresses in all our guest rooms.

SIMMONS define 'SLEEP' as an all-natural performance enhancing wonder. Their sleep technology is designed for the most restorative sleep, giving you heightened focus, maximized energy, and ultimate clarity during the day.



High-performance air-conditioner.

The high-performance air-conditioner with the humidification function set up by all rooms.



Variety of Amenity Services.

You can use many amenities are basically needed. Body soap, Shampoo, Conditioner, Mineral-water, coffee, tea, razors, tooth-blush, comb, and so on.

tobago café & bar

Breakfast Menu

Healthy delicious Breakfast at sunny trendy restaurant.

We highly recommend taking breakfast at our restaurant. You can enjoy wide variety of menus from American Breakfast to Chinese traditional one and Japanese one. We carefully select materials. For example, vegetables are mainly sent from local farm, and eggs are prizewinning one.



Breakfast Menu

